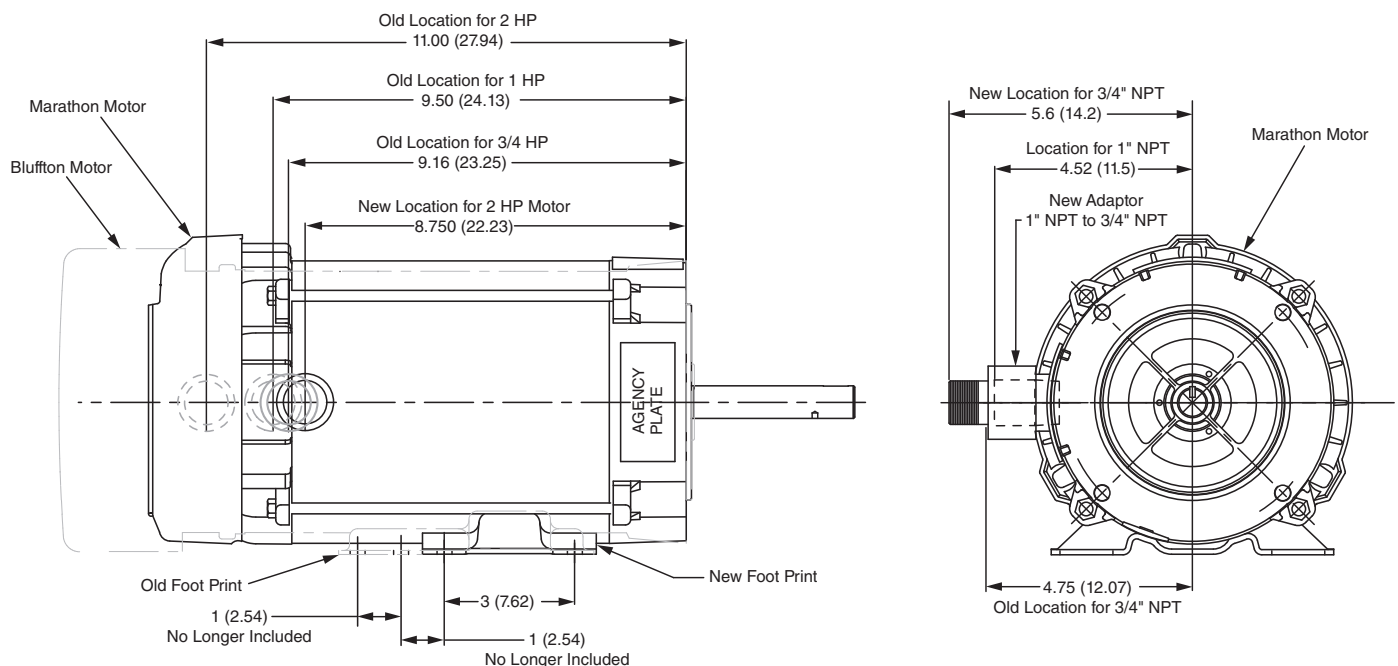


# Electric Motor Change

Sales Bulletin  
No. 251  
February 2015

Effective immediately, the 1 HP Bluffton motor currently used on Coro-Flo regenerative turbine pump models C10, C12, C13, CF10, CF12, and CF13 is being replaced with a 2 HP Marathon motor. The new motor configurations are 2 HP (standard) and 3 HP (optional). The dimensions for the new 2 HP Marathon motor are slightly different than the previously used 1 and 2 HP Bluffton motors so the conduit location and foot print will change. The illustration below is a dimensional comparison between the previously used Bluffton motors (3/4, 1, and 2 HP) and the new 2 HP Marathon motor. If you are replacing one of the models mentioned above or installing a new one, please review the new dimensions carefully before mounting the 2 HP Marathon motor or installing the electrical piping.

*Please note: The S-30 and SM-30 switch assemblies for the 2 HP motor do not include thermal override protection.*



## Benefits:

- Since the amperage for the new 2 HP Marathon motor is nearly identical to the 1 HP Bluffton motor at the same differential pressure, the wire size for the electrical connection may not change (see IF101 for details).
- Capable of higher differential pressures without overloading the motor.
- The new 2 HP Marathon motor comes standard and will continue to use the same part number (P.N. 4261).
- The reduction in motor configurations simplifies inventory requirements.

Solutions beyond products...  
**CORKEN**  
IDEX

CORKEN, INC. • A Unit of IDEX Corporation  
3805 N.W. 36th St., Oklahoma City, OK 73112 U.S.A.  
Phone (405) 946-5576 • FAX (405) 948-7343  
Visit our website at [www.corken.com](http://www.corken.com)  
E-mail us at [co-salesdept@idexcorp.com](mailto:co-salesdept@idexcorp.com)



@CorkenInc



# Wiring Sizing & Diagrams

Service Bulletin  
No. 44C  
March 2015

## Close-Coupled Regenerative Turbine Pumps—Coro-Flo®

Model	Switch Types	Motor Part No.	Hp	Phase	Voltage	Approximate Full Load Amperage	Minimum Wire Size, AWG Length of Run in Feet			Heater Element Part No.	Wiring Connections	
							0-100	to 200	to 300			
C9 C10	S-10 SM-10	2555 (Obs.)	3/4	1	115 230	10 5	12 12	8 12	6 12	2574 (P28)	115V 2277-X1 or 2277-X2 Switch Assy 	208-230V 2277-X1 or 2277-X2 Switch Assy 
C10 C12	S-20 SM-20	2556 (Obs.)	1	1	115 230	18 9	8 12	6 12	4 10	2610 (P32)	115V  (uses switch 2275)	208-230V  (uses switch 2275)
C10 C12 C13	—	3760 (Rep. by 4261)	2	1	115 230	24 12	8 12	4 10	2 8	4250 (P36)	115V  (uses switch 2275)	208-230V  (uses switch 2275)
C10 C12 C13	S-30 SM-30	4261	2	1	115 230	20 10	8 12	4 10	2 8	No overload	115V 2277-X3 or 2277-X4 Switch Assy  (uses switch 3784)	230V 2277-X3 or 2277-X4 Switch Assy  (uses switch 3784)
C14	—	2557 <sup>a</sup>	3	3	230 460	10 5	12 12	12 12	12 12	—	208-230V 	460V 

<sup>a</sup> Pump must rotate in the direction shown on pump case. If not, switch any two of the three incoming 3 phase lines.

**Notes:**

1. Green wire, if present, should be grounded.
2. For Coro-Flo units with oversized motors, follow the wiring information for the appropriate motor and operating voltage.
3. Any differences on the motor nameplate should take precedence over the data presented on this sheet.
4. All electrical work should be done by a qualified electrician familiar with local codes.



CORKEN, INC. • A Unit of IDEX Corporation  
3805 N.W. 36th St., Oklahoma City, OK 73112 U.S.A.  
Phone (405) 946-5576 • FAX (405) 948-7343  
Visit our website at [www.corken.com](http://www.corken.com)  
E-mail us at [cocsalesdept@idexcorp.com](mailto:cocsalesdept@idexcorp.com)



@CorkenInc

