

Steel DOT Cylinders

Steel DOT cylinders, manufactured in accordance with DOT specifications 4BA, 4BW, 4E. Pneumatic tested. Powder coat finish.

4.25 Lb. DOT Cylinders - Worthington

Part no.	Description
281149	With OPD & Type 1 connection*
* Boxed cylinder also available.	



11 Lb. DOT Cylinders - Worthington

Part no.	Description
281166	11 Lb. With OPD & Type 1 connection*
* Boxed cylinder also available.	



20 Lb. DOT Cylinders

Part no.	Description
Worthington	
281247	Vertical w/OPD & Type 1 connection
296996	Horizontal, w/OPD & Type 1 connection
308551	Vertical w/OPD & Type 1 connection w/Gauge



30 Lb. DOT Cylinders

Part no.	Description
Worthington	
281277	Vertical w/OPD & Type 1 connection
297003	Horizontal, w/OPD & Type 1 connection
Manchester	
1166TC.2	Vertical w/OPD, Type 1 connection and gauge
1175TC	Horizontal w/OPD, Type 1 connection and gauge



40 Lb. DOT Cylinders

Part no.	Description
Worthington	
294366	Vertical w/OPD & Type 1 connection
Manchester	
1222TC.2	40 lb. vertical w/OPD, Type 1 connection and gauge



43.5 Lb. DOT Cylinders - Worthington

Part no.	Description
294240	43 lb. w/POL connection



60 Lb. DOT Cylinders - Worthington

Part no.	Description
282449	W/collar, POL connection, outage
1433	Screw cap

100, 200 & 420 Lb. Cylinders - Worthington

Part no.	Description
282157	100# W/collar, POL connection, outage
282168	100# W/collar, multivalve
1433	Screw cap for 100#
282209	200# DOT, w/multivalve connection
294590	200# ASME w/service valve, relief, fill valve, gauge
296214	420# DOT, w/POL connection, outage, fill, relief, gauge
282371	420# ASME, Service Valve w/POL connection, outage, 3/4" fill, relief, gauge
282377	420# ASME, Service Valve w/POL connection, outage, 1 1/4" fill, relief, gauge
8981-04004B	ASME gauge for 420#
296488	Float gauge assembly for 420# cylinder, top mount



Compact Cylinder Valves with OPD

Compact Cylinder Valves with Overfill Prevention Device

Rochester OPD Valve with Gauge

Part no.	Description
OPD-20-GAUGE	OPD w/Gauge for 20# Cylinder
OPD-30-GAUGE	OPD w/Gauge for 30# Cylinder
OPD-DIAL	C-Level Dial only



OPD Valve (without dial)

Part no.	Dip Tube Length	Use with DOT Cylinder up to
OPD425	3.1"	4.25 lbs.
OPD20	4.0"	20 lbs.
OPD30	4.7"	30 lbs.
OPD40	6.4"	40 lbs.



Prices subject to change without notice. Some items may not be in stock at all warehouses or may be special order. Please check with TEECO.

N1

Rev 3/17

Order Online: www.teecoproducts.com
e-mail: info@teecoproducts.com

Sacramento, CA (800) 225-6621 Auburn, WA (800) 426-9456 Rapid City, SD (800) 843-8660

N1

Quality Steel Tanks

Teeco Products is a representative for Quality Steel. We carry Quality Steel tanks, available for pickup at our locations, or for delivery to your location. Truckloads of tanks can also be delivered directly to you. Call us for your next load of tanks!

ASME Domestic Tanks

Aboveground LPG tanks conform to the latest edition and addenda of the ASME Code for Pressure Vessels, Section VIII Division I. Complies with NFPA 58 and is listed by Underwriters Laboratories, Inc. All tanks are pre-purged and ready to be filled.

Rated at 250 psig from -20° F. to 125° F. All tanks may be evacuated to 23" of vacuum.

Q-Kote™ high performance Epoxy primer / Urethane topcoat system maximizes corrosion resistance while providing ultra high durability for resistance to outdoor weathering.



Part no.	Description
120AG	120 gallon domestic tank
250AG	250 gallon domestic tank
320AG	320 gallon domestic tank
500AG	500 gallon domestic tank
1000AG	1,000 gallon domestic tank

ASME Underground Tanks

Underground LPG tanks conform to the latest edition and addenda of the ASME Code for Pressure Vessels, Section VIII Division I. Complies with NFPA 58. All tanks are pre-purged and ready to be filled. Rated at 250 psig from -20° F. to 125° F. All tanks may be evacuated to 23" of vacuum. Q-Thane™, a ready-to-bury* underground coating, is a high build, high performance epoxy primer with a polyurethane topcoat; uniquely formulated to maximize corrosion resistance and coating performance in underground applications. Liquid withdrawal opening located under the dome on all UG vessels.

Part no.	Description
250UG	250 gallon underground domestic tank
320UG	320 gallon underground domestic tank
500UG	500 gallon underground domestic tank
1000UG	1,000 gallon underground domestic tank



N2

*Q-Thane™ is designed to offer optimum performance in underground conditions when buried with the coating skin 100% intact and with cathodic protection installed.

Quality Steel Vertical Tanks

Smaller footprint than horizontal tanks. Ideal for installations where space is an issue, or for added exposure. May be purchased separately or included as part of a load of tanks.

Quality Steel Vertical Tanks can also be hooked up to your choice of Dispenser Package.

Part no.	Description
01059192SF	500 Gallon Vertical Tank
01109092SF	1,000 Gallon Vertical Tank



WESROC Tank Monitoring System

WESROC offers propane and fuel tank remote monitors over cellular networks and global satellite networks with simple setup, accurate readings, timely reports, simple online setup and web and mobile availability of readings.

WESROC also offers monitoring for Cylinder Cabinets.

WESROC
MONITORING SYSTEMS



Series no.	Description
MT-9103CTM-AG5	Cellular Tank Monitor Straight Sensor 5 ft Cable
MT-9103CTM-UG5	Cellular Tank Monitor Right Angle Sensor 5 ft Cable
MT-9103CTM-UG10	Cellular Tank Monitor Underground 10 ft Cable
MT-9103CTM-LD5	Cellular Tank Monitor Large Dial 5 ft cable w/Female Connector
MT-9102CTMV-UG5	Residential Cellular Tank Monitor Right Angle Sensor AG/UG 5 ft Cable (weekly report)

Forklift Tanks - Worthington

Worthington Forklift Cylinders



Includes universal float gauge, liquid service valve, safety relief valve, fixed liquid level, plugged vapor and liquid fill ports.

Steel

Part no.	Description
281976	20 lb. steel forklift cylinder
282070	33½ lb. steel forklift cylinder
282092	43½ lb. steel forklift cylinder



Aluminum

Part no.	Description
300112	33½ lb. aluminum forklift cylinder
297303	43½ lb. aluminum forklift cylinder



Buffer Tanks

Includes universal float gauge, vapor service valve, safety relief valve, fixed liquid level, plugged vapor and liquid fill ports.



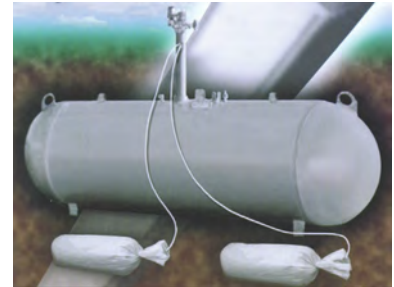
Part no.	Description
281831	20 lb Aluminum Buffer Tank w/OPD
301372	20 lb Steel Buffer Tank w/OPD

N3

Cathodic Protection for Underground Tanks - Anode Bags

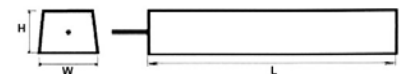
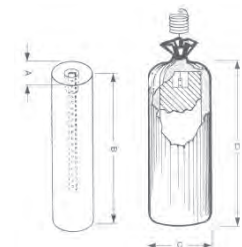
Two commonly applied protection methods can be used; external coating and cathodic protection. These two methods are complementary, and should be used together. While an effective external coating can insulate more than 99% of the steel surface from the soil environment, no coating is perfect. Damage from construction or soil stresses creates tiny defects which can result in accelerated corrosion at the defect.

Cathodic protection prevents corrosion at the defects by applying DC current from an external source, such as a magnesium anode. This forces the tank to become a cathode, and corrosion of the tank is prevented. Application of sufficient DC current to the tank will prevent any corrosion from occurring. Due to its low current requirements, the preferred cathodic protection for an LP-Gas tank is a sacrificial anode system, generally consisting of a magnesium rod(s) attached to the tank with a copper wire and buried near the tank. This results in current flow from the anode to the tank and the resulting cathodic protection effectively stops the corrosive process from taking place.



Standard Application							
Part no.	Description	Anode Size / Bare Weight	Packaged Weight	Dimensions - Bare Anode		Dimensions - Packaged Anode	
				A	B	C	D
17-AB	Magnesium Anode Bag 17 lb. H1 w/ wire	17 lbs.	45 lbs.	4"	18 3/4"	6 1/2"	24"

Coastal Application						
Part no.	Description	Anode Size / Bare Weight	Width	Height	Length	Packaged weight
18-ZAB	Zinc Anode Bag S-18 18 lb w/10' #12 TW wire	18 lbs.	1.4"	1.4"	36"	70 lbs.



Cathodic Protection Testing Equipment and Electrodes

CPV-2 Analog

Measures DC structure-to-earth potentials of various buried or submerged metal structures. Powered by two "AA" penlight cells. Solid state integrated circuit has built-in filter to reject AC interference. May also be used without the reference electrode to measure direct current potentials from 0 to 2 volts, such as potentials across an insulated flange, anode to structure, or structure to structure.

CPV-4 Digital

Measures DC structure-to-earth potentials of various buried or submerged metallic objects. Powered by an ordinary 9-volt battery, the Model CPV-4 gives an immediate reading in large 1/2 inch liquid crystal display numerals. The large scale integrated circuit has a built-in filter to reject AC interference. Digital readout eliminates interpolation of voltages. Small, lightweight. Die-cast metal case.

CPV-2



CPV-4



Part no.	Description
CPV-2	Voltmeter, complete with halfcell - Analog meter. Includes carrying case, a Copper-copper sulfate half cell electrode (model 6B) and two heavy-duty 6' coiled cables with clamps
CPV-4	Voltmeter, complete with halfcell - Digital meter. Includes carrying case, a Copper-copper sulfate half cell electrode (model 6B) and two heavy-duty 6' coiled cables with clamps
2A	Copper-copper sulfate half cell electrode - Pocket size
6B	Copper-copper sulfate half cell electrode - Pointed tip
8A	Copper-copper sulfate half cell electrode - Flat tip
049-011	Crystals
50070	Replacement Ceramic Tip for 6B - Pointed tip
50060	Replacement Ceramic Tip for 8A - Flat tip

2A



6B



8A

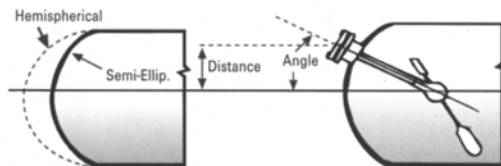
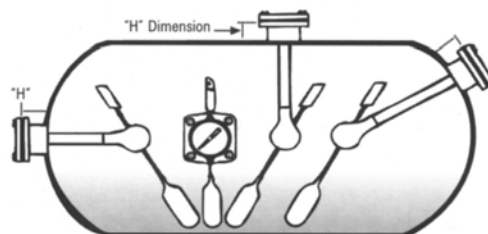
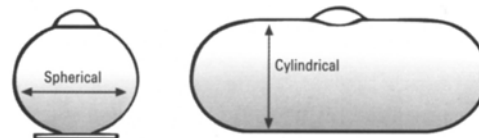
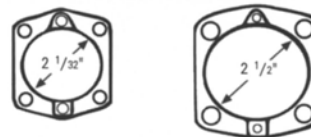


How to Order Rochester Gauges

ASME Tanks

ASME horizontal cylindrical tanks for above-ground service.

- Determine gauge head size and material. The following choices are available:
 - Junior aluminum bolted head, 2 1/32" bolt circle.
 - Junior brass bolted head, 2 1/32" bolt circle.
 - Senior aluminum bolted head, 2 1/2" bolt circle.
 - Senior brass bolted head, 2 1/2" bolt circle.
 - 1 1/4" NPTF threaded Junior zinc head
 - 1 1/4" NPTF threaded Junior brass head
 - 1" NPTF threaded Junior zinc head
 - 1" NPTF threaded Junior brass head
- Specify tank diameter (on the tank nameplate, or measure the circumference of the tank, from which the diameter can be calculated).
- Specify gauge mounting location:
 - Top
 - End or side at centerline
 - Angle
- If on the tank end, state head shape (hemispherical or semi-ellipsoidal)
- If the gauge is angle mounted:
 - Specify the degree of the angle from the horizontal centerline, or:
 - Specify the distance in inches from the horizontal centerline vertically to the center of the gauge opening.
- Specify the "H" dimension (riser height). This is the distance in inches from the top of the coupling or flange to the outside surface of the tank.



Replacement Gauges

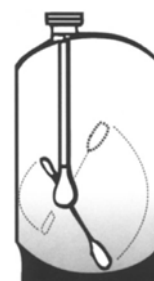
Ordering duplicate or replacement gauges may be simplified by referring to the numbering code on the side of the gauge head. Example:

Model Number	Support Length	Tank Diameter	Mfg. Date
6284	6	24	D97



Vertical Cylinder Gauges

- Determine gauge head size and material.
- Specify tank diameter, or measure the circumference of the cylinder.
- Specify the height of the cylinder (not including foot ring).
- Specify the distance from the center of the gauge opening to the outside wall of the cylinder.
- Specify the "H" dimension, the measurement from the highest point of the cylinder head to the top of the coupling or flange.
- Specify tank capacity (200 lb., 300 lb., 420 lb.)
- Furnish the name of the cylinder manufacturer.



N5

Applications

Series	Style	Domestic Tanks	Autogas Tanks	Lift Truck Cylinders	Bulk Storage Tanks	Transport & Bobtail Tanks	RV Tanks
6200 Series	Bolted						
7200 Series	Threaded						
7300 Series							
8900 Series							
6300 Series Magnetel	Welded Adapter						

Rochester Threaded Gauges

7300 Series 3/4" Magnetic Liquid Level Gauge

For use in DOT lift truck cylinders or domestic ASME tanks.

Head: Die-cast zinc (7300) or forged brass (B7300); Junior 3/4" male NPTF, 2" hex wrench flats. 13/8" hex wrench flats on thermoplastic gauge. Everseal thread coating available.

Dial: Junior snap-on or screw-on (horizontal, vertical, universal). Float: Aluminum one-piece, nitrile rubber on new 7384 thermoplastic polymer gauge.

DOT Forklift Cylinders			
Part no.	Size (Lbs.)	Style	Diameter
7384-01028	20, 33½, 43½	Horizontal	12"
7384-01010	60, 100	Horizontal	14½"
7381-01003	14	Vertical	9"
7381-01002	20	Vertical	12"
7384-01005	20	Universal	12"
7384-01006	33½	Universal	12"
7384-01007	43½	Universal	12"
ASME Rotary Gauge Replacement			
Part no.	Mount	Diameter	
7384-01030	End C/L	15"	
7384-01034	End C/L	24"	
7384-01035	End C/L	30"	
7384-01031	End C/L	36"	
7384-01032	End C/L	41"	
7384-01036	End C/L	48"	



8900/B8900 Series 1" Magnetic Liquid Level Gauge

Measures LP-Gas levels in domestic tanks, ASME Autogas tanks with 1" couplings and ASME RV tanks. These gauges can be top, side or angle mounted. Head: Die-cast zinc (8900) or forged brass (B8900); 1" NPTF Junior, 2" or 13/8" hex wrench flats. Everseal thread coating available.

Dial: Available with choice of dial types; standard 5% to 95% direct-read dial #5323S01749, direct-read 5323S01789 screw-on or direct-read #5364S01951 snap-on. *TwinSite* transmitter also available.

Float: Aluminum, one piece.

NOTE: All ASME Autogas tank gauges are considered as a "special order" item. Please specify mounting (top, c/l, upper-45, lower-45) and whether standard or *TwinSite* sender/dial.

Part no.	Head	Mount	Dial
8981	Zinc	Top	Direct-read
B8981	Brass	Top	Direct-read
8944*	Zinc	Side, end, angle	Direct-read or TwinSite
B8944*	Brass	Side, end, angle	Direct-read or TwinSite
8941	Zinc	Top	TwinSite



7200/B7200 Series 1¼" Magnetic Liquid Level Gauge



Direct-reading gauges for top, side or angle mounting on domestic tanks.

Head: Die-cast zinc(7200) or forged brass (B7200); 1¼" male NPTF threads and 2" hex wrench flats. *Everseal* thread coating available.

Dial: Standard direct-read percentage #5323S01749; *TwinSite* transmitter also available.

Float: Aluminum, one-piece.

Part no.	Head	Mount	Dial
7281	Zinc	Top	Direct-read
B7281	Brass	Top	Direct-read
7284	Zinc	Side, end, angle	Direct-read
B7284	Brass	Side, end, angle	Direct-read
7241	Zinc	Top	Direct-read or TwinSite
7244	Zinc	Side, end, angle	Direct-read or TwinSite

DOT Forklift Cylinders			
Part no.	Size (Lbs.)	Style	Diameter
7284-00024B	20, 33½, 43½	Horizontal	12"
7281-00045B	20	Vertical	12"
7281-00049B	43½	Vertical	12"
7284-120	20	Universal	12"
7284-00034B	33½	Universal	12"
7284-00035B	43½	Universal	12"

Rochester Bolted Gauges

6200 Series Magnetic Liquid Level Gauge

Designed for use in domestic tanks, Autogas tanks, lift truck cylinders and RV tanks. Easily mounts in all ASME tanks with Junior or Senior adapters. Can be top, side or angle mounted for above ground or below ground tanks Head: Aluminum or forged brass Junior 4-bolt; aluminum sensor 4-bolt.

Dial: Standard direct-read dial #5323S01749. 4" dial or *TwinSite* transmitter also available. Gasket: Buna-N. Float: Aluminum, one-piece.

Part no.	Head	Mount	Dial
6281	Junior	Top	Direct-read
6284	Junior	Side, end, angle	Direct-read
6241	Junior	Top	TwinSite
6244	Junior	Side, end, angle	TwinSite
B6244	Junior (Brass)	Side, end, angle	TwinSite
6280	Senior	Top	Direct-read
6283	Senior	Side, end, angle	Direct-read
6240	Senior	Top	TwinSite
6243	Senior	Side, end, angle	TwinSite
6290	Senior	Top	4"
6293	Senior	Side, end, angle	4"

DOT Forklift Cylinders			
Part no.	Size (Lbs.)	Style	Diameter
6284-00024	20, 33½, 43½	Horizontal	12"
6284-00045	60, 100	Horizontal	14½"
6281-00045	20	Vertical	12"
6281-00048	33½	Vertical	12"
6281-00050	60	Vertical	14½"
6281-00047	100	Vertical	14½"
6284-00032	14	Universal	9"
6284-00033	20	Universal	12"
6284-00034	33½	Universal	12"
6284-00035	43½	Universal	12"
ASME Forklift Tanks			
Part no.	Size (Gallons)	Diameter	
6281-5 1/2-10	10	12"	



TwinSite

TwinSite Remote Monitoring

TwinSite EZ-Read senders, with high-tech, polycarbonated dial chambers, are directly attached to the head of Junior or Senior liquid-level gauges.

The transmitters not only give a direct reading, but also send an electrical signal to remote receivers. Unobstructed direct-reading view, with improved accuracy and reliability. May only be used with intrinsically safe circuits.



Part no.	Description
5628S02537P	Junior sender, 0-90 ohms, Advanced Matrix film
5630S02851P	Junior sender, 70-10 ohm
5644S02545P	Junior sender, 0-30 ohm

Domestic Tank Monitoring System

Part no.	Description
5-1925	TwinSite switch, Junior, 30% Low, E-F fractional

R3T Wireless Transmitter

For Transports and Bobtails

The Rochester R3T Wireless Transmitter provides on-demand digital display of tank levels to hand-held devices. Compatible with Rochester RoughRider® Magnetel® & Taylor RoadMaster (built after 2003) 4" R3D® Dials.

The Rochester R3T App displays current tank levelson all Rochester R3T enabled gauges within RF range of handheld device [typically less than 100m (300 ft.).]



- Powered by 3.3V Lithium Battery (Operational Life of approximately 7 years)
- Includes 6 ft. of module wire for connection to R3D® Dial
- Easy set up and installation
- User friendly app
- NEMA 4 rated enclosure
- Bluetooth transceiver output power: +4 dBm
- Typical RF Range < 100m (300 ft.)
- FCC, CE Approved • Operating Temperature: -40°F to 176°F (-40°C to 80°C)

Part no.	Description
6316	R3T Wireless Transmitter w/ 6 ft. of module wire (shipped loose)
5APKS03045	4" Magnetel R3D® fluorescent LP/ NH3 dial 5-95% dial graduations
0023S00031	Illuminated MR module cover for 4" R3D® fluorescent dials

Rochester Magnetel Gauges

6300 Series Magnetel Liquid Level Gauge

Liquid level gauges accurately determine the percentage of tank volume for most liquids in stationary bulk storage applications.

Head: Stainless steel. Dial: Standard direct-read 4" and 8".

Gasket: Spiral-wound, Teflon filled, stainless steel. Float: Stainless steel.

Part no.	Description
**6336-†	4", top mounting
**6339-†	4", side, end or angle mounting
**6360-†	8", top mounting
**6342-†	8", side, end or angle mounting
** Specify prefix; Dia: P - propane, 5-95%, A - NH ₃ , 5-95%, C - combination LPG/NH ₃ Mounting: X - Straddle, Y - 2" opening, M - Special mobile, V - Vertical† Specify Mounting Flange Trim: -8 Aluminum, -11 stainless steel (-11 should be used on containers of 3500 WG).	



M6300 Series Magnetel

Rough Rider Liquid Level Gauge

Designed to stand the vibration and shock inherent in tank in transport and bobtail mobile service.

Head: Stainless steel.

Dial: Standard direct-read 4" & 8".

Gasket: Spiral-wound, teflon-filled, stainless steel.

Float: Stainless steel.

Part no.	Description
CM6339-11-**	4" dial, mobile LPG tanks up to 90" in diameter
** Specify tank diameter	



Illuminated MR Module Cover

Optional Illuminated MR module cover available for retrofit on existing 4" Magnetel® RoughRider® R3D® Silver/Black or Fluorescent Dials. The illuminated MR module cover provides a clear and bright view of the dial in dark conditions.

Part no.	Description
0023S00031	Illuminated MR module cover for 4" R3D® fluorescent dials
5APKS03045	4" Magnetel R3D® fluorescent LP/NH ₃ dial 5-95% dial graduations
0023S00033	Illuminated MR module cover for 4" R3D® silver background dials
5ANTS03047	4" Magnetel R3D® silver/black LP/NH ₃ dial 5-95% dial graduations
M6300 Series	Magnetel RoughRider Gauge(See Data Sheet M6300 for ordering information)



0023S00031 Module Cover on 5APKS03045 Fluorescent Dial



0023S00033 Module Cover on 5ANTS03047 Silver/Black Dial

Magnetel Ordering Information

- Liquid product and specific gravity.
- Type vessel, inside diameter (in inches) and head type (ellipsoidal, semi elliptical, hemispherical).
- Prefix.
- Part no. for mounting location (top, side, 8" or 4" dial).
- Trim number.
- Bolt hole location of mounting flange (centerline or straddle).
- If other than standard percent of total volume dial is required.
- Top-mounted gauges require dimension from mounting flange face to tank shell plus shell thickness.
- Angle-mounted gauges require tank drawings for computing proper gauge dimensions.

Prices subject to change without notice. Some items may not be in stock at all warehouses or may be special order. Please check with TEECO.



Magnetel Mounting Flange

Tank mounting flanges are not included with Magnetel gauges and should be ordered separately. Note: Flanges welded to tank with top and bottom bolt holes on the vertical centerline are standard with Rochester gauges.

When the flange is attached so that the bolt holes span the centerline (see drawing) add the prefix "X" to the Magnetel gauge model number.

Example: X6342-8

Part no.	Description
22-29	2-1/2" NPT threaded neck flange
22-30	Forged steel welded flange
22-500	3" weld neck

Stud bolts (56-404) and nuts (44-403) are furnished with each Magnetel gauge. Cap screws (40-9) can be furnished on request.

Magnetel Weather Guard

Part no.	Description
23S-1	Weather cover, 8"
23S-2	Weather guard, 4"
23S-8	Weather guard, 8"



Magnetel Parts

Part no.	Description
5016S00477	Dial, 4", 3% - 97%, all liquids
5016S00478	Dial, 4", 3-97%, LPG
5137S03047	Dial, 4" Magnetel, 5-95%
5015S00481	Dial, 8", 3-97%
15-11	Gasket, mounting flange, Buna-N
15-451	Gasket, under 4" crystal
0093-00403	Mounting bracket, for 8" dial chamber

N8

Dials

R₃D Remote Ready Dial Selection Chart

Gauge Construction	Orientation	Gauge Series*	Dial #	
Senior 4-Bolt	Above Ground	Top	6280	5986S02733
	Below Ground	Top	6280	5986S02799
	Vertical Cylinder	Top	6280	5986S02772
	Above Ground	Angle	6283	5986S02772
	Above Ground	End/Center	6283	5986S02772
Junior 4-Bolt	Above Ground	Top	6281	5909S02733
	Below Ground	Top	6281	5909S02799
	Vertical Cylinder	Top	6281	5909S02772
	Above Ground	Angle	6284	5909S02733
	Above Ground	End/Center	6284	5909S02733
Junior 1 1/4" NPT	Above Ground	Top	7281	5909S02733
	Above Ground	Angle	7284	5909S02733
	Above Ground	End/Center	7284	5909S02733
Junior 1" NPT	Above Ground	Top	8981	5909S02733
	Vertical Cylinder	Top	8981	5909S02772



Note: Gauge Series can be found stamped on the side of the gauge head. See next page for additional R3D Dials.

R₃D Remote Ready 4" Dial for RoughRider™ Bobtail and Transport Gauges

Part no.	Description	Reading
5ANTS03047	4" Dial, R3D Ready	5% - 95%
5APKS03045	4" Dial, R3D Ready, Fluorescent	5% - 95%



5ANTS03047



5APKS03045

R₃D Remote Ready 8" Dial for Magnetel™ Storage Tank Gauges

The R3D 8" dial lens features an integral socket that accepts the R3D Hall Effect Module, which is featured in the industry's leading RF Remote Monitor manufacturers.

Part no.	Description	Reading
5ANGS03044	8" Dial, R3D Ready, Centerline	3% - 97%



N9

Direct Read Forklift Dials

Part no.	Description	Reading
5323S01789	Dial, Junior, horizontal	Fractional
5323S02323	Dial, Junior, 20 lb. vertical	Fractional
5343S01791	Dial, Junior, 33½ lb. universal	Fractional
5343S01992	Dial, Junior, 33½ lb. universal	Fractional
5343S01993	Dial, Junior, 43½ lb. universal	%
5323S02558	Dial, Junior snap-on, 20 lb. vertical	%
5-2445-BOLT	Dial, Junior bolt-on, 20 & 33½ lb. universal	Fractional
5-2445-SNAP-ON	Dial, Junior snap-on, 20 & 33½ lb. universal	Fractional
5323S02320	Dial, Junior snap-on, 43½, 60, 100 lb. horizontal	Fractional



Parts

Universal Dial Kits by Rochester

For old, obsolete Junior or Senior gauges. Fits any LPG float gauge ever built.



31-80

31-81

Part no.	Description
31-80	Dial kit, Senior
31-81	Dial kit, Junior

R3D Misc Dials

Part no.	Description
5988S02788	Dial, Taylor Type B R3D with dust cap
5AAAS02733	Snapon Jr R3D, horizontal
5AAAS02772	Snapon Jr R3D, vertical

Miscellaneous Rochester Parts

Part no.	Description
40-21	Dial screw, Junior or Senior
40-413	Dial screw, 4" gauge and flow indicator
40-414	Gauge head screw, Junior
40-415	Gauge head screw, Senior
15-4	Gauge gasket, Buna N, Senior
15-7	Gauge gasket, Buna N, Junior
15-21	O-ring, Buna N, Junior
15-22	O-ring, Buna N, Senior
39-2	Aluminum bezel Ring, 4" gauge and flow indicator
93-02	Bracket, Senior w/4" dial
9750-00005	Switch, NC to open at 15% - 25%
9750-00007	Switch, NC to open at 25% - 35%

Other Misc Dials



130022

130023

Part no.	Description
130022	Dial 2701 R3D Above ground, 5-94% (2002 and prior)
130023	Dial 2701 R3D Above ground, E-90% (2003 and later)

Accessories

Flow Indicator

Indicates direction of flow of compatible liquids in pipelines at working pressures up to 500 psig. Must be installed in pipeline tees. Direct read dial. Made of forged steel and 300 series stainless steel. Will fit various pipe sizes.



Part no.	Description
6286-00325	Flow indicator with 3 1/4" vane, 4" dial and 2" MPT adapter
6286-00475	Flow indicator with 4 3/4" vane, 4" dial and 2" MPT adapter
6286-00525	Flow indicator with 5 1/4" vane, 4" dial and 2" MPT adapter
6286-00550	Flow indicator with 5 1/2" vane, 4" dial and 2" MPT adapter

Bimetallic Thermometers

Commonly used on storage tanks, bobtails and transports. Made of 304 stainless steel. For use only with thermowells. -90°F to 130°F. 1/2" MNPTF.



Part no.	Description
1750-4	4" stem length
1750-6	6" stem length
1750-9	9" stem length
1750-12	12" stem length

Tank Car Thermometer

Range -30° to +120°. Thermometer and case are available separately or combined.



Part no.	Description
610	Tank car thermometer and armor case
610-11	Thermometer only

Tools

Float Gauge Drill Guide

The Float Gauge Drill Guide is a precision tool, designed to accurately guide a drill bit through the center of a broken float gauge screw.



Part no.	Description
JR-DG	Junior Drill Guide
SR-DG	Senior Drill Guide

Prices subject to change without notice. Some items may not be in stock at all warehouses or may be special order. Please check with TEECO.

Order Online: www.teecoproducts.com
e-mail: info@teecoproducts.com

N10

Sacramento, CA
(800) 225-6621

Auburn, WA
(800) 426-9456

Rapid City, SD
(800) 843-8660

Rev 3/17