

TEECO Topics

Serving the Western US Since 1946



Apr - May - Jun 2021

News, Information and Products for the LP-Gas Equipment Professional

Western Propane Convention Mark Your Calendars & Register Now!



The Western Propane Trade Show and Convention will resume in 2021!

With the benefit of a vaccine, and a sincere desire to safely assemble one of the biggest propane shows in the U.S., this year's event will take place **August 11-13** in Reno, Nevada.

Come hang out with your favorite Teeco people and Teeco Row Vendors on the tradeshow floor and join us Thursday night for some 75th Anniversary Hospitality Suite fun!

For more information or to register for the convention, please contact the Western Propane Gas Association at 916-447-9742, email: info@westernpga.org, or click [here](#).

We Can't Wait To See You Again!

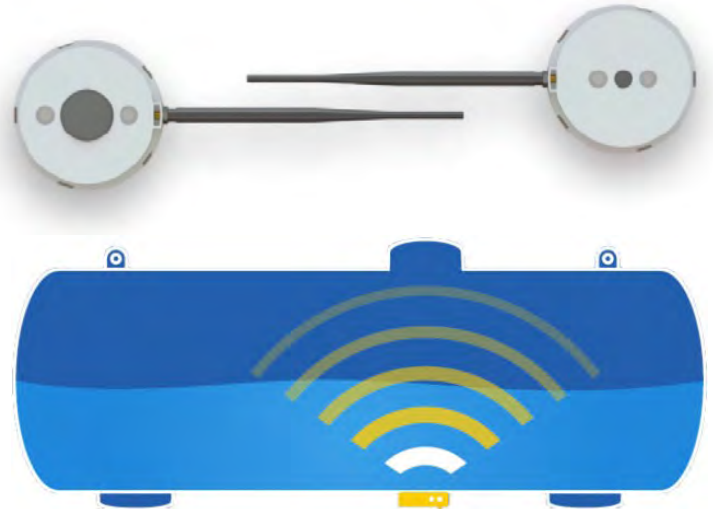
See Inside...

NEW at Teeco! Sonariot Tank Sensors	Page 1
Outside the Box	Page 2
Red Dragon Weed Flaming	Page 3
RegO Regulator Comparison	Page 4-5
Update to Corken Compressors	Page 6
Tank Refurbishing Program	Page 7
What Is This Product?	Page 8



Sonar technology that affordably and accurately measures tank liquid levels.

**Pro-Plus Sensors
For Pressurized Tanks**



Easy Install - Magnetic mount
Non-Invasive
Highly Accurate: +/- 1%
2G-4G Global Sim
Role Based Mobile Application
Management Dashboard
Bulk Data Available via API
Ultra Affordable – High ROI

Contact your Teeco Representative for more information

Quality LP Gas Products from a Company You Can Trust

Outside the Box

With Jay Stephens

*President and CEO
Teeco Products, Inc.*

Welcome to summer everyone. With the warmer weather comes time for reflecting on our winter (such as it was); Tank Setting Season; Vehicle Preventative Maintenance; Tank Painting and unfortunately our continued battle with many states' policies on Electrification of the World.

The Propane Industry is one of the heroes – not the villain!

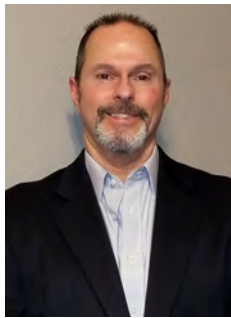
- Our wonderful (said very sarcastically) electric industry started fires burning millions of acres and homes just last year. This caused even more power outages. The Propane industry was instrumental in servicing those fighting the fires. Providing hot water, cooking food as well as powering generators to those without 'reliable' power.

- The electric industry cuts off power continuously to millions of citizens with little notice due high winds...actually even a breeze seemed to cause the over-reaction. The propane industry teamed with generator suppliers to power homes and businesses throughout California.

- School districts and fleet owners around the world continue to covert to propane (AutoGas) to help limit pollution and save money.

- Our politicians continue with blinders on to support these unreliable, expensive policies when one of the solutions is staring them right in the face.

Our politicians push home builders to build all electric homes. Sacramento City Council just voted to have new construction all electric by 2026 – five years away! Are they insane? Ask any restaurateur worth their salt if they prefer to cook with



electricity – not a chance in hell! Any At-Home-Cook favors cooking their family meals with gas (natural or propane gas) over electricity.

If one ventures into the suburbs and foothills of California, you can find tens of thousands of homes built in the late 70's and 80's. These were originally built with electric heat pumps. One of the first things I did in my new home was to eliminate that VERY, VERY expensive piece of trash and add a gas burning furnace. Many HVAC companies prospered quite handsomely during the past 20 years with these conversions.

I remain amazed at the ignorance of our politicians...and just a tad angry. Below is what is at stake (courtesy of the Western Propane Gas Association) – Over 200,000,000 gallons of propane used in homes for heating and cooking. Soon they will also begin taking away our ability to BBQ food, Patio Heaters, Pool and Spa Heaters and Tiki Torches. We just finished with one of the worst periods in my lifetime. We were all forced to eat outdoors at all of our favorite restaurants. Propane Industry to the rescue again – Heaters, cylinders, cabinets and dispensers flying off the shelves. Again, the Propane Industry was the HERO. I could go on and on, but I think we all know most of this anyway. Sometimes you just have to rant. It's time to throw some meat on my propane grill; sit by my propane fire pit and take a dip in the gas-heated pool.

Jay Stephens

Words to live by –

Freedom is never more than one generation away from extinction. We didn't pass it to our children in the bloodstream. It must be fought for, protected, and handed on for them to do the same, or one day we will spend our sunset years telling our children and our children's children what it was once like in the United States where men were free. - Ronald Reagan

TEECO Topics is published four times yearly by TEECO Products, Inc. as a service to our customers. 3,000 copies are distributed to customers and selected LPG industry leaders.

President & CEO
Jay Stephens

Vice President of Administration & CFO
Gary Childress

Regional Sales Manager, Central/Southern California, Nevada and Arizona
Dave Cox

Operations Manager, Sacramento, CA
Mike Cooper

Regional Sales Manager, Pacific Northwest/Northern California
Dave Drimmel

Operations Manager, Auburn, WA
Randy White

Regional Sales Manager, Rocky Mountains/Midwest
Mike Lorenz

Operations Manager, Rapid City, SD
Dean Travis

Fabrication Manager
Randy Rothschilder

Engineering, Construction & Fabrication Manager
Paul Connelly

Marketing Manager
Mary Clements

TEECO Corporate Headquarters

16881 Armstrong Avenue
Irvine, CA 92606
800-854-3463
or 949-261-6295
FAX 888-854-3463
or 949-474-8663



Sales and Service

TEECO Sacramento, CA Superstore

Sales, Fabrication, Engineering & Construction
7471 Reese Road
Sacramento, CA 95828
800-225-6621 or 916-688-3535
FAX: 888-225-6621 or 916-689-1219

TEECO Rapid City, SD

414 E. Blvd. N.
Rapid City, SD 57701
800-843-8660 or 605-342-2802
FAX 888-843-8660 or 605-342-4942

TEECO Auburn, WA

1601 Pike Street N.W.
Auburn, WA 98001
800-426-9456 or 253-735-0222
FAX 888-426-9456 or 253-735-1008

Website: www.teecoproducts.com
Email: info@teecoproducts.com

To Receive your copy of Teeco Topics via email, please send your request to mary@teecoproducts.com

PRODUCT SPOTLIGHT



How To Properly Flame Weeds *So they won't come back!*



Flame with a quick pass

Just a second of exposure on a small 1 - 4 inch weed with the torch is all you need to wilt the weed.



Rule of Thumb

After flaming, the weed will turn dark green and wilt. A thumbprint on the weed leaf indicates success.



Buh Bye!

Within days, weeds have wilted, died and dried.

VT2-23C Weed Dragon

100,000 BTU/hr. Adjustable. Comfortable hand grip for lawn and garden weeding. Kit includes: torch, UL listed hose, hand tighten POL fitting, adjusting needle valve, UL listed regulator and spark igniter.

Part no.	Description
VT2-23C	Lawn/garden torch kit, 23" handle



VT2¹/₂-24CE

500,000 BTU/hr. Economy version of the VT3-30C. Uses lightweight steel, less paint and thermoplastic hose.

Kit includes: torch, UL listed hose, POL fitting, adjusting needle valve and pipe thread compound.

Part no.	Description
VT2 1/2-24CE	Torch kit, 23" handle



JET4/JET 8

Pilot flame, with squeeze valve trigger on handle for full flame. Flame length up to 5 feet (JET4) or 6 feet (JET8). For those big jobs which require high heat. Operates at 30 psi to full tank pressure.

Part no.	Description
JET4	Vapor torch only, 1,000,000 BTU/hr., 40 ¹ / ₂ " length
JET8	Vapor torch only, 2,000,000 BTU/hr., 7" length





Regulators That Stand Above The Competition

Zinc Die Casting Body and Bonnet

Casting precision is significantly better and the strength of zinc is considerably higher than the aluminum used on the competition.

Epoxy Paint

Maintains high durability to ensure a protective outer covering unlike competitors' powder coating, which is susceptible to cracks, flakes and chips

Laser engraved information on bonnet

(part #, serial #, outlet pressure and date of manufacture)

Easy to see, won't wear off and won't fade, unlike stickers on some competitors' products

RegO Regulators are serviceable

Seat disc, vent screen(suppressor), inlet nozzle and bonnet cap are all field replaceable without voiding any UL listings.

Competitors' regulators do not contain any serviceable components.

Replaceable Brass inlet connection & orifice

If debris or tampering has affected the inlet nozzle or orifice, replacement nozzles can be used without voiding UL or requiring the regulator to be replaced, which saves money!

Repairable and/or Replaceable seats can be easily accessed by service personnel

The seat disc on RegO's LV4403B & LV5503B series regulators can be replaced or cleaned unlike the competitors' where replacing the regulator would be the only alternative.

RegO Regulators are Designed, Manufactured, Assembled and Tested in the USA



RegO Regulators are highly respected in our Industry

" We use only RegO vales in our tanks. They are reliable and top quality with great service and no problems. Our customers mostly demand that we use RegO. We are very proud to be installing Made in USA RegO since we started in 1997."

- Chuck Kinnie, President Shasta Gas and Shasta Tank, Northern California



Meet the Trainer: Cody Reeves

Cody Reeves is the Technical Services Manager for RegO. If you attended any of RegO's on-line Spring Training classes, he'll be a familiar face. He led 28 on-line training sessions, attended by over 600 LP-Gas Industry professionals from the US and around the world, this year alone.



Training covered a variety of applications and products found on domestic and bulk propane installations. Cody's expertise and presentation techniques made these trainings informative and engaging.

Cody has been in the industry since 2008 as a licensed technician in New England and held various positions before joining RegO in 2018. He has provided his expertise in expanding the RegO training modules and materials for technicians and sales people. He most recently developed the RegO Field Topics program that has been widely accepted and is a service person favorite.

" RegO is grateful to have someone with Cody's experience and enthusiasm to help our distributors and customers in proper use of our products. " Ed Varney, Director Business Development, RegO

To receive information about future RegO Online Training Sessions, please contact Cody Reeves: creeves@regoproducts.com.

To view RegO's Field Topics, go to: <http://www.regoproducts.com/lpg/lpg-nh3-products/field-topics.html> or click [here](#).



LV3403TR9V9

Compact High Pressure First Stage Regulator

Ideal for use as a first stage regulator on any domestic size ASME or DOT container in propane gas installations requiring up to 1,500,000 btu/hr.



LV5503B Series

Low Pressure Second Stage Regulators

Designed to reduce first stage pressure of 5 to 20 PSIG down to burner pressure, normally 11" w.c. Ideal for larger commercial and industrial applications, multiple cylinder installations and large domestic systems. 1,600,000 - 2,300,000 btu/hr.



LV4403B66RA

90° Low Pressure Second Stage Regulator

Designed to reduce first stage pressure down to appliance pressure, normally 11" w.c. Ideal for medium commercial installations, vapor meter installations and normal domestic loads. Compact design makes for ease of installation in new and retrofit install situations. 1,000,000 btu/hr.



LV4403Y Series

Second Stage Regulator for 2 PSIG Systems

Designed to reduce first stage pressure of 10 PSIG down to 2 PSIG. Systems that utilize this regulator use smaller than normal piping inside of the building. A special final stage regulator, not the appliance regulator, is required to reduce this intermediate 2 PSIG pressure down to 11" w.c. 1,000,000 btu/hr.



LV404B34

Compact Twin Stage Regulators

Designed to reduce container pressure down to 11" w.c. delivery pressure. Ideal for "on site" container applications such as homes, mobile homes and cottages for average domestic service, including small ASME tanks and 100-420 lb DOT cylinders. 450,000 btu/hr.



LV3403B66R

Compact "Back-Mount" Regulator

The LV3403BR Back Mount Regulator is designed to reduce first stage pressure of 5-10 PSIG down to burner pressure normally 11" w.c. Designed as a second stage regulator for smaller applications with flow requirements up to 450,000 BTU/hr. and are ideal for homes, mobile homes, and cottages.

Pigtails & Hogtails

Pigtails are available in a variety of connections, sizes and styles. Care should always be taken in selecting the proper pigtail for a particular application. Note: Engineered Controls International, Inc. recommends a new pigtail be installed with every new and replaced regulator.



913PS12

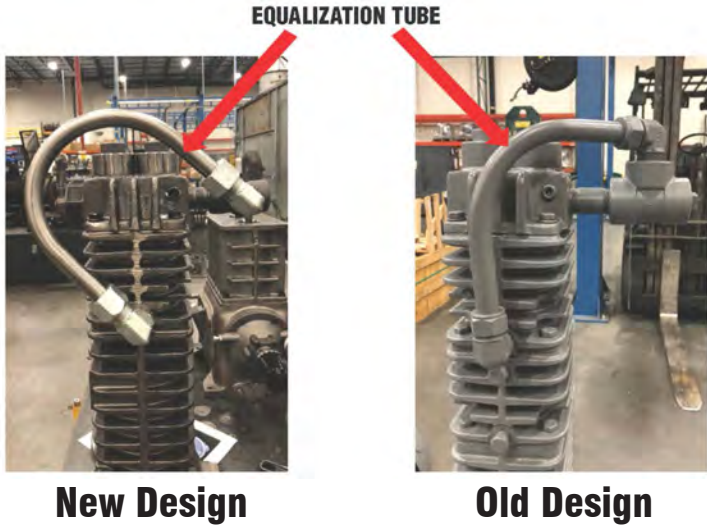


Connections	Approximate Length	Item #		
		Pigtails- 1/4" Tube		Hogtails - 3/8" Tube
		7/8" Hex Short Nipple	1 1/8" Hex Long Nipple	7/8" Hex Short Nipple
M. POL x M. POL	5"	—	—	913PS05
	12"	912PS12	—	913PS12
	20"	912PS20	912PA20	913PS20
	30"	912PS30	—	913PS30
	36"	912PS36	912PA36	913PS36
	48"	912PS48	912PA48	913PS48
1/4" Inverted Flare x M. POL	12"	912FS12	—	—
	20"	912FS20	912FA20	—
	30"	912FS30	—	—
	36"	912FS36	—	—
1/4" M. NPT x M. POL	5"	—	—	913JS05
	12"	912JS12	—	913JS12
	20"	912JS20	—	913JS20
	30"	912JS30	—	913JS30
	36"	912JS36	—	—
1/2" M. NPT x M. POL	12"	—	—	913LS12
1/2" M. NPT x 3/8" M. NPT	12"	—	—	913KL12

Corken Announces Update to Equalization Tube Layout in Compressors

As a part of Corken’s continuous improvement process and based on the feedback from customers in the field, a change in design was made to the equalization tube for 91 Compressor Models to improve ease of maintenance and assembly. The design of the equalization tube has changed as shown below.

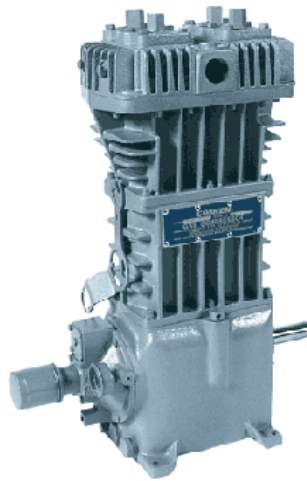
The new equalization tube will be 2 inches taller than the old design.



Corken Compressors

Applications:

- Propane cylinder filling
- Bulk transfer
- Truck/barge/railcar unloading
- Liquid transfer/vapor recovery
- Tank evacuation for maintenance
- LPG/butane/ammonia



Compressor Models

Model #	Description
91	44 GPM, w/flywheel
91-***	44 GPM, w/options - See table at right
291	88 GPM, w/flywheel
291-***	88 GPM, w/options - See table at right
491	198 GPM, w/flywheel
491-***	198 GPM, w/options - See table at right
691	330 GPM, w/flywheel
691-***	330 GPM, w/options - See table at right

*** Enter Style number. See Teeco Catalog section B for options.

Float Gauge Drill Guides



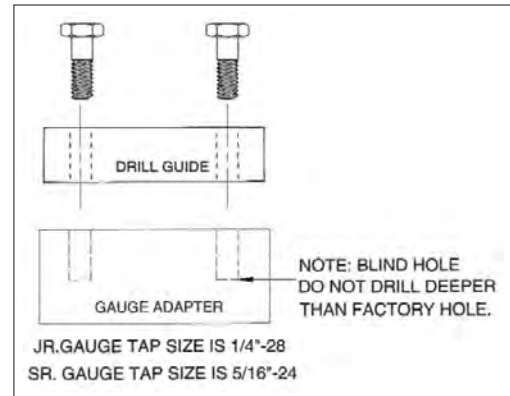
The Float Gauge Drill Guide is a precision tool, designed to accurately guide a drill bit through the center of a broken float gauge screw.



JR-DG



SR-DG



2021 REBATE PROGRAMS!

Take Advantage of Industry and Manufacturers’ Rebates

Click here for direct links to these rebates. Or visit www.TeecoProducts.com and click on Industry Links.

Teeco's Tank Refurbishing Program

With rising costs and increasing lead times on steel and various steel products, now is the perfect time to put your old propane tanks back to work!



(Existing Propane Tank)



(Refurbished Propane Tank)

For safe practice, Teeco recommends replacing all of the following parts when refurbishing your tanks.

We're offering quantity breaks on these essential items to help you get your tanks back in working order. Choose the parts you need and save when you purchase quantities of 50 or more.

Part	Item #
Fill Valves	L7579
	L6579
Vapor Equalization Valve	7573D
Relief Valves	7583G (3/4")
	8684G (1")
	8685G (1 1/4")
Service Valves	9101C1
	9101R1
Multivalves	7556R12.0
	PT7556R12.0
	8593AL16.0
	G8475RL
Outage Gauges	G8475RLW
	PG8475RL
	3165C
	3165CF12.0
Chek-Loks	3165D
	3165DF12.0
	7590U
Gauges (ie, 6281, 6284, "One" Gauge) (For Gauge options, see Section N in the Teeco Catalog or in the Product section of our website)	7591U

Quantity discounts are based on specified quantities of the same product and do not apply to contracted pricing customers. Sorry, no mix-n-match available.

Celebrating 75 Years in the Industry!

Since 1946, Teeco has been providing products and services to the Propane Industry. Through it all, we've held a special place in our hearts for all our friends in the industry; customers, suppliers, and yes, even our competitors.

Now we would like to hear what makes Teeco special to YOU! Tell us about a time when a Teeco employee went above and beyond - or taught you something - or made you laugh.

We will be compiling your photos, comments and anecdotes throughout the year and featuring some of them in a future edition of Teeco Topics.

Please send yours to mary@teecoproducts.com.

Thanks for being a part of Teeco's 75th year... And beyond!



Use Teeco's Online Ordering System for Your Next Order



Have you visited www.teecoproducts.com lately? Discover the numerous benefits to using our Online System:

Simple to use - Set up is easy. All you need is a Teeco Account Number and an email address. Once you're set up, simply access your account using your email address and your password.

Shop your way - You can easily customize (and expedite!) your shopping experience by creating Favorites Lists and utilizing our Quick Order Pad.

Find information in a snap - Whether you're online to order or to browse, you can retrieve useful information on your Teeco account such as order history, orders in process, open invoices and more. And best of all, it's available 24/7!

Free Freight on online orders of \$975 or more - A quick and easy way to save money on freight! (Some restrictions apply, so see our website for details.)

If you're new to online ordering, call your Teeco representative or your local Teeco office and we'll be happy to give you a hand.

TEECO

PRODUCTS, INC.

Corporate Office
16881 Armstrong Avenue
Irvine, CA 92606

Customer Service Locations

Sacramento, CA
(800) 225-6621
FAX (888) 225-6621

Auburn, WA
(800) 426-9456
FAX (888) 426-9456

Rapid City, SD
(800) 843-8660
FAX (888) 843-8660



Presorted Standard
U.S. Postage
PAID
Newport Beach, CA
Permit No. 373

Order Online, Anytime: www.teecoproducts.com

Inside **TEECO**

Teeco Catalog Flashback: Circa 1971

Remember the Destroilet?

According to Teeco's 1971 catalog, "Destroilet is the first patented, proven dry sanitary human waste disposal system." Have you ever seen one? Installed one? Used one??

Send us your stories or comments and we'll send you a thank you gift.



Email your answer to mary@teecoproducts.com

Answer to last edition's "What Is This Product?"

The product is a property card holder from the deluxe version of Monopoly, Teeco Edition. Popular property cards such as TildenWalk, Goodwin and Andrews Railroads, Marshall Etter Way, Parkhouse Place, Bailey Avenue and others were stored on the ring until someone landed on the property and purchased it from the bank. Players hated to land on the "Go To Jail" place on the board as they then had to go to Irvine, California without passing Go and collecting \$200.00.

Dan Binning - Executive Director, CO & NM Propane Gas Associations

This is the worst Frisbee I've ever bought, it's hard to throw and it hurts to catch!

B.J. VanAusdal, Freeway Propane



Item #1003-4
Corken Brass
Impeller
Catalog page B5



Core Exchange Program

Turn in your old pump for credit on a
NEW Smith Pump.

All exchanges are based on model for model, on a one-on-one basis. Core Must be exchanged within one year. Contact your Teeco representative for more information.



E-Series



MC-1, GC-1



D-Series