

### Mr. Heater

#### Portable Radiant Heaters

Perfect for Construction Sites, Agricultural Buildings, Workshops, Repair Shops, Loading Docks, Large Open-Sided Tents, Sporting Events, Sheds and Barns, Recreation Areas, Remodeling Jobs

- **Efficient Radiant Heat:** Heats objects, not the air
- **Instant Heat:** Piezo push button ignition
- **Economical:** No electricity required
- **Quiet Operation:** No Blowers
- **Made To Last:** Durable steel construction
- **Economical:** Efficient and clean burning
- **Safe:** Shuts off w/loss of flame or power.

#### Forced Air Propane Heaters

Perfect for Construction Sites, Sports events, Patios, Factories, Garden Parties, Utility/Farm Buildings, Barns

- **Instant Heat:** Economical, efficient and clean burning
- **Maximum Heat Circulation:** Heavy duty high output fan
- **Safe:** Heater shuts off with loss of flame or power supply
- **Made To Last:** Rugged, durable steel construction
- **Ready To Use:** Simple hook-up; hose and regulator included.

#### Convection Heaters

Ideal for Construction Sites, Industrial/Commercial Work spaces, Agricultural Buildings, Emergencies, Workshops, Sports Events, Remodeling.

- **Instant Heat:** Economical, efficient, and clean burning
- **Economical:** No electricity required
- **Easy Start:** Push button pilot light ignition
- **Uniform Heating:** 360 degree directional heat
- **Ready To Use:** Simple hookup: hose and regulator included
- **Safe:** Heater shuts off with loss of flame; Sturdy base prevents tip-overs

#### Tank-Top Heaters

- Versatile propane heaters with Hi-Med-Low settings for temporary heat
- BTUs range from 10,000-45,000
- Offered in single, double and triple burner models



J1

Part no.	Description	BTU/hr (up to)
MH15	Tank Top Heater - Single burner	15,000
MH15C	Tank Top Heater / Cooker	15,000
MH15T	Tank Top Heater - Single burner	15,000
MH15TS	Tank Top Heater - Single burner w/Spark Igniter	15,000
MH30T	Tank Top Heater - 2 burner	30,000
MH30TS	Tank Top Heater - 2 burner w/Spark Igniter	30,000
MH35LP	Portable Radiant Heater, LP-Gas	35,000
MH45T	Tank Top Heater - 3 burner	45,000
MH60QFAV	Forced Air Heater	60,000
MH80CVX	Convection Heater	80,000
MH85QFAV	Forced Air Heater	85,000
MH125QFAV	Forced Air Heater	125,000
MH125LP	Portable Radiant Heater, LP-Gas	125,000
MH170QFAVT	Forced Air Heater w/Thermostat	170,000
MH200CVX	Convection Heater	200,000
MH400FAVT	Forced Air Heater w/Thermostat	400,000
F273169	Tank Foot Tank Stabilizer	-

### Detroit Radiant

#### P Series Radiant Heaters

Ceramic burner. Aluminum reflector. Adjustable cylinder mounting bracket. UL. listed single tank pressure regulator and high pressure hose. Excess flow check POL fitting. AGA. Listed manual shut-off. AGA. and UL listed 100% shut-off safety gas valve. Main burner flame sensor. All models features tip over check. Cylinder not included.

**P-16T**, rated at 16,000 BTU, operates thirty hours on a 20 lb. propane cylinder.

**P-32T** is rated at 32,000 BTU and operates fifteen hours on a 20 lb. propane cylinder.



Part no.	Description
P-16T	Portable infrared heater, 16,000 BTU/hr.
P-32T	Portable infrared heater, 32,000 BTU/hr.
P-101	P-16T rayhead assembly
P-103	P-32T rayhead assembly
P-106	P-32T reflector assembly

Prices subject to change without notice. Some items may not be in stock at all warehouses or may be special order. Please check with TEECO.

J1

Rev 8/20

Order Online: [www.teecoproducts.com](http://www.teecoproducts.com)  
e-mail: [info@teecoproducts.com](mailto:info@teecoproducts.com)

Sacramento, CA  
(800) 225-6621

Auburn, WA  
(800) 426-9456

Rapid City, SD  
(800) 843-8660

### L.B. White

#### Tradesman Portable Forced Air Heaters

High temperature output for small to large construction sites. Variable heat output. Electronic ignition, continuous self-diagnostics (on ULTRA models), heavy duty construction, 1 year warranty. CSA models certified for USA and/or Canada.

Part no.	BTU/hr.	Heated Air Output (CFM)	Fuel Type	Electrical Supply
T100	50,000-100,000	350	LP-Gas	115VAC
T170	125,000-170,000	625		
T170ULTRA				
T170N	125,000-155,000	625	Natural Gas	
T170NULTRA				
T400	250,000-400,000	1530	LP-Gas	
T400ULTRA			LP-Gas	



#### Premier Ductable Unit Heaters

Great for small work spaces, renovation jobs and applications where low noise is important and heat needs specific direction. Can be used inside or ducted from outside. Automatic thermostat for better temperature control and consistent warmth. Model P350DF operates on dual fuel, either LP-Gas or natural gas. CSA certified for U.S. and/or Canada.

J2

Part no.	BTU/hr.	Heated Air Output (CFM)	Fuel Type	Electrical Supply
P80*	40,000-80,000	450	LP-Gas	115VAC
P80N*			Natural Gas	
P170*	85,000-170,000	1200	LP-Gas	
P170N*			Natural Gas	
P350*	175,000-350,000	2,400	LP-Gas	
P350N*			Natural Gas	
P350DF*			LP/NAT	

\* Self diagnostic system

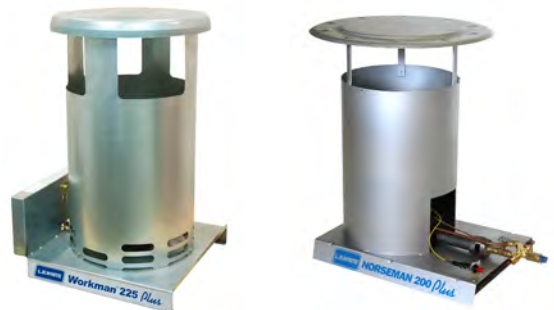


#### Workman and Norseman Convection Heaters

Designed and built to handle heating needs in sites that lack electricity. Lightweight and portable. Available in both horizontal and vertical models. Cast iron burner and heavy duty steel construction. Models include the lightweight Workman models and heavy duty Norseman models.

Part no.	BTU/hr.	Ignition	Fuel Type	Alignment
N200H	200,000	Manual	LP-Gas	Horizontal
N200HPLUS*		Piezo		
N250	250,000	Manual		
W100PLUS*	100,000	Piezo	Natural Gas	Vertical
W100NPLUS*		Piezo		
W225PLUS*	225,000	Piezo	LP-Gas	

\* CSA models Certified for U.S. and/or Canada



TEECO stocks L.B. White replacement parts and accessories. Please call with heater model and parts requirements.

Prices subject to change without notice. Some items may not be in stock at all warehouses or may be special order. Please check with TEECO.

J2

Rev 8/20

Order Online: [www.teecoproducts.com](http://www.teecoproducts.com)  
e-mail: [info@teecoproducts.com](mailto:info@teecoproducts.com)

Sacramento, CA  
(800) 225-6621

Auburn, WA  
(800) 426-9456

Rapid City, SD  
(800) 843-8660

### L.B. White



#### Classic - Pilot Ignition, Side Draw Design

For indoor applications. Simple and dependable operation. Easy to install - all mounting hardware included. Thermostat control. Heavy duty construction and baked polyester paint finish. All heaters available in CSA U.S. certified configurations. Indoor mount only. 115VAC electrical supply required.

Part no.	BTU/hr.	Heated Air Output (CFM)	Fuel Type	Features
CLASSIC60	60,000	250	LP-Gas	Thermostat, regulator, 10' gas hose
CLASSIC60-3				-----
CLASSIC60-4				Thermostat
CLASSIC115	115,000	600	LP-Gas	Thermostat, regulator, 10' gas hose
CLASSIC115-3				-----
CLASSIC115-4				Thermostat
CLASSIC170	170,000	760	LP-Gas	Thermostat, regulator, 10' gas hose
CLASSIC170-3				-----
CLASSIC170-4				Thermostat

#### Guardian - Pilot Ignition, Bottom Draw Design

Part no.	BTU/hr.	Heated Air Output (CFM)	Fuel Type	Features
G250PILOT LP	160,000 - 250,000	1050	LP-Gas	Includes sediment trap

#### Guardian - Spark Ignition, Bottom Draw Design

Part no.	BTU/hr.	Heated Air Output (CFM)	Fuel Type	Features
G250SI LP	160,000 - 250,000	1050	LP-Gas	Includes sediment trap



#### Guardian - Hot Surface Ignition, Bottom Draw Design

Flexible and economical variable heat output. Compact, with indoor or outdoor mounting capability. Advanced diagnostic controls. High quality components and construction. All models AGA and CGA certified and shipped with sediment trap.

Part no.	BTU/hr.	Heated Air Output (CFM)	Fuel Type	Electrical Supply
G60HSI LP	30,000 - 60,000	240	LP-Gas	115VAC
G60HSI-N			Natural Gas	
G100HSI LP	50,000 - 100,000	400	LP-Gas	
G100HSI-N			Natural Gas	
G250HSI LP	160,000 - 250,000	1025	LP-Gas	
G250HSI-N			Natural Gas	
G325HSI LP	200,000 - 325,000	1700	LP-Gas	220VAC
G325HSI-N			Natural Gas	

J3

#### Parts and Accessories

TEECO stocks a complete line of L.B. White replacement parts and accessories. Please call with heater model and parts requirements.

Part no.	Description	For Model
00815	Sediment trap	All models
08748	Eye bolts and chain	All, indoor mounting
09810	Outdoor mounting kit	G60HSI
09811	Outdoor mounting kit	G100HSI
20094	Outdoor mounting kit	G250HSI, G250SI, G250PILOT
24097	Premium Outdoor mounting kit*	G250HSI, G250SI, G250PILOT
09103	Outdoor mounting kit	G325HSI
24098	Premium Outdoor mounting kit*	G325HSI
20257	Sloped top for outdoor mount	G250HSI, G250SI, G250PILOT
20100	T-Duct (105° duct)	G250HSI, G250SI, G250PILOT
03399	Gas cock	All models

\* Includes sloped top, insulated ducting and mounting brackets.

### Empire Comfort Systems

#### Radiant Vent-Free Heaters

Burns clean and odor-free. 100% efficient, and more economical than electric. Top-mounted controls. Available in a variety of floor and wall mount models from 10,000 BTU to 30,000 BTU. Piezo Igniter. Optional blowers and non-thermostat models available.

NOTE: Unvented heaters are not approved for use in some locales. Check with proper authorities before installing.

Part no.	BTU/hr.	Fuel Type	Blower	Automatic Blower	Temp. Control
SR10LP	10,000	LP-Gas	-	-	----
SR10TLP					Thermostat
SR10NAT		Natural gas			----
SR10TNAT					Thermostat
SR18LP	18,000	LP-Gas	SRB18	SRB18T	----
SR18TLP					Thermostat
SR18NAT		Natural gas			----
SR18TNAT					Thermostat
SR30LP	30,000	LP-Gas	SRB30	SRB30T	----
SR30TLP					Thermostat
SR30NAT		Natural gas			----
SR30TNAT					Thermostat



#### J4 Direct Vent Wall Furnaces

Installs easily on most any outside wall. Requires a minimum of floor space and provides even, energy-efficient heat. Quiet operation. Millivolt wall thermostat and piezo pilot ignition. Blower kit available.

Part no.	BTU/hr.	Heated Air Output	Fuel Type
DV210SGXLP	10,000	60 CFM	LP-Gas
DV215SGXLP	15,000		LP-Gas
DV25SGLP	25,000	75 CFM	LP-Gas
DV25SGNAT			Natural gas
DV35SGLP	35,000		LP-Gas



#### Console Vented Room Heaters

Allows a maximum flow of warm air off the unit. Features piezo pilot ignition and hydraulic thermostat temperature control. Heated air output 75 CFM. Optional floor-level blower available.

Part no.	BTU/hr.	Fuel Type
RH25LP	25,000	LP-Gas
RH35LP	35,000	



#### Parts and Accessories

TEECO also stocks Empire replacement parts and accessories. Please call with heater model and parts requirements.

Prices subject to change without notice. Some items may not be in stock at all warehouses or may be special order. Please check with TEECO.



### Empire Comfort Systems

#### Visual Flame Vented Room Heaters

Allow a maximum flow of warm air. Optional radiants offer an orange, fire-like glow. Features piezo pilot ignition and hydraulic thermostat temperature control. Heated air output 100 CFM.

Part no.	BTU/hr.	Fuel Type
RH50BLP	50,000	LP-Gas
RH50BNAT		Natural gas
RH65BLP	65,000	LP-Gas
RH65BNAT		Natural gas

#### Parts

Part no.	Description
FRB3	Blower
RAD8	Radiant Package
RHL2	Log Kit for RH-50B, RH-65B



#### Vent-Free Blue Flame Heaters

Blue Flame heaters warm the air, which rises to create natural circulation in the room. Ideal for any supplemental heat application, producing an inviting atmospheric warmth quickly and efficiently.

The BF10 is equipped with a hydraulic thermostat with a constant 10,000 Btu input, while the BF20 is equipped with a modulating hydraulic thermostat that modulates from 8,500 Btu to 20,000 Btu for continuous temperature control. The BF30 offers the visual warmth of an alluring blue flame with a hydraulic thermostat that modulates from 8,500 Btu to 30,000 Btu for continuous temperature control.

Part no.	BTU/hr.	Fuel Type
BF10LP	10,000	LP-Gas
BF20LP	20,000	LP-Gas
BF30LP	30,000	LP-Gas



J5

#### Counterflow Furnaces

Direct Vent Counterflow (DV Series) and Upflow Counterflow (FAW Series) wall furnaces require only one square foot of floor space and install on inside or outside walls. Generous 55,000 BTU rating allows multi-room heating with optional side outlet kit. Complete with 24V wall thermostat, piezo pilot ignition and floor level blower. Heated air output 400 CFM.

Part no.	BTU/hr.	Fuel Type
FAW55SPPXLP	55,000	LP-Gas
FAW55SPPXNAT		Natural Gas
DVC55SPPXLP		LP-Gas
DVC55SPPXNAT		Natural Gas
DVC55IPXLP		LP-Gas
DVC55IPXNAT		Natural Gas



#### Gravity Vented Wall Furnaces

Designed to recess into the wall for super-slim appearance. Piezo pilot ignition, thermostat temperature control. Optional wall thermostat, rear register kit to heat adjoining rooms, and top-mounted blower that increases circulation, but not height. Heated air output 75 CFM.

Also available in white.

Part no.	BTU/hr.	Fuel Type
GWT25WLP	25,000	LP-Gas
GWT25WNAT		Natural Gas
GWT35WLP	35,000	LP-Gas
GWT35WNAT		Natural Gas
GWT50WLP	50,000	LP-Gas
GWT50WNAT		Natural Gas



**Rinnai**

**Direct Vent Wall Furnaces**

With a Rinnai EnergySaver® Direct Vent Wall Furnace, homeowners will be as comfortable with their energy bill as they will be with their room temperature.

- Modulates the usage of gas, optimizing energy efficiency
- Multiple models offer just the right size and configuration to heat a whole home or complement an existing heating system
- Unique modulating technology produces the specific level of heat needed at any given moment, responding to the smallest temperature changes.
- Standby power consumption less than 1 watt
- Warranty: 5 years on parts, 2 years on labor
- Altitude approved to 10,200 feet
- Constantly monitors room temperature 2" (5 cm) from the floor
- Consistently detects temperature changes of less than 1° F
- Within seconds, the Rinnai EnergySaver® Direct Vent Wall Furnace begins to gently heat the room
- Adjusts to increase or decrease fan speed and BTU output to reach desired preset temperature
- In case of a sudden influx of cold air, the EnergySaver® Direct Vent Wall Furnace automatically adjusts fan speed and BTU to quickly restore warmth to the room
- Heat loss is minimized since Rinnai EnergySaver® Direct Vent Wall Furnaces require no ductwork

**J6**



Model	Color	Gas Type	Input Rating (btu) (Low/High)	AFUE Rating	Shipping Weight	Power Consumption (Electronic Ignition)
EX08CTP	Beige <small>(EX22CT &amp; EX38CT models are also available in White. Please contact Teeco for availability)</small>	LP-Gas	3,000 / 8,000	82%	46 lbs	41 watts
EX08CTN		Natural Gas	3,000 / 8,000	82%	46 lbs	41 watts
EX11CTP		LP-Gas	5,700 / 11,000	81%	46 lbs	44 watts
EX11CTN		Natural Gas	5,500 / 11,000	81%	46 lbs	44 watts
EX17CTP		LP-Gas	8,200 / 16,700	81%	57 lbs	46 watts
EX17CTN		Natural Gas	8,200 / 16,700	81%	57 lbs	46 watts
EX22CTP		LP-Gas	8,200 / 20,700	81%	57 lbs	56 watts
EX22CTN		Natural Gas	8,200 / 21,500	81%	57 lbs	56 watts
EX38CTP		LP-Gas	13,200 / 36,500	80%	88 lbs	117 watts
EX38CTN		Natural Gas	13,200 / 38,400	80%	88 lbs	117 watts

Accessories and Conversion Kits Also Available

Prices subject to change without notice. Some items may not be in stock at all warehouses or may be special order. Please check with TEECO.

**J6**

Rev 8/20

Order Online: [www.teecoproducts.com](http://www.teecoproducts.com)  
e-mail: [info@teecoproducts.com](mailto:info@teecoproducts.com)

Sacramento, CA  
(800) 225-6621

Auburn, WA  
(800) 426-9456

Rapid City, SD  
(800) 843-8660

### Detroit Radiant

#### DR Series

Gas fired, high intensity, unvented/ infra-red heaters. The DR Series is commonly used in areas with high air infiltration, high ceilings, and/or spot heating applications. Very economical.

The DR Series is available in a multitude of configurations, ranging from 30 to 160 MBTU/hr. with nine different control options. Call for application and ordering information.

Model no.	BTU/hr		Suggested Mounting Heights	Millivolt	120V	24V
	Natural Gas	LP Gas				
DR30	30,000	30,000	12' - 14'	NMV-2 PMV-2	NFS-2 PFS-2	NFS-2 PFS-2
DR30(S)						
DR45	45,000	45,000				
DR50	50,000	50,000				
DR55	55,000	55,000	13' - 15'			
DR60	60,000	60,000	14' - 16'			
DR75	75,000	75,000	15' - 17'			
DR80	80,000	80,000				
DR85	85,000	85,000	16' - 18'			
DR90	90,000	90,000	17' - 20'			
DR95	95,000					
DR100	100,000					
DR130	130,000	120,000	21' - 24'			
DR160	160,000	145,000	24' - 28'			

#### DR Series Ordering Instructions

**Model Number Format:** DR (BTU) (Gas Type) (Ignition Type) (Voltage) Example: DR 60 NFS-2 120V

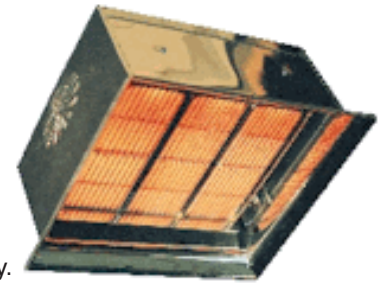
**N** = Natural Gas, **P** = Propane Gas

**NMV-2/PMV-2** = Manual Ignition, constant pilot, 100% shutoff, self energizing. Includes RK-130 thermostat and 35' of wire.

**Note:** Millivolt models are not for use in high wind applications.

**NFS-2/PFS-2** = Direct spark ignition, 100% shutoff. Specify 24V or 120V

**Note:** Circuit boards are potted on all models.



#### HL3 Series - Two stage, infra-red tube heater

Benefits include superior fuel economy, superior comfort levels and equipment longevity. Capable of operating in either a high fire mode or a low fire mode. Its mode is dictated by momentary environmental demands, resulting in significant fuel savings over single stage infrared heaters. BTU inputs from 65,000 to 200,000 BTU/hr (35% Low Fire Reduction). Tube lengths from 20 to 70 feet. Available in natural or LP-Gas Call for application and ordering information.

#### DX3L Series - Single stage, infra-red tube heater.

The DX3L Series offers superior low intensity heat, performance and longevity, and is designed to provide years of reliable trouble-free service.

The burner allows this heater to efficiently use BTU inputs from 50,000 to 200,000 BTU/hr. and have emitter lengths from 20 to 80 feet. The true advantage of this burner is the improved heat distribution that it produces. Provisions for various configurations (U or L shaped patterns) are also available. This heater, available in natural or LP-Gas, also offers superior serviceability. Call for application and ordering information

Series	20 ft	30 ft	40 ft (A)	40 ft (T)	50 ft (A)	50 ft (T)	60 ft	70 ft	80 ft
HL2	•	•	•	•	•	•	•	•	N/A
DX3L	•	•	•	•	•	•	•	•	•

J7

